

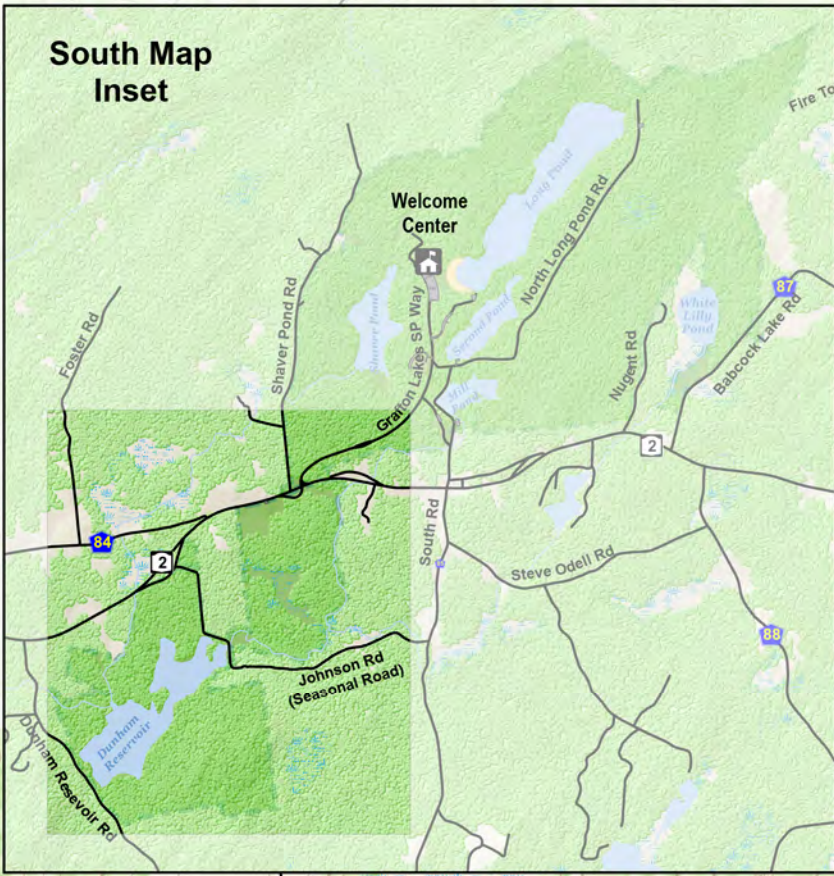
# Grafton Lakes State Park

254 Grafton Lakes State Park Way,  
Cropseyville, NY 12052

In Case of Emergency: 911  
Park Police: (518) 584-2004  
Welcome Center: (518) 279-1155



New York State  
Parks, Recreation and  
Historic Preservation



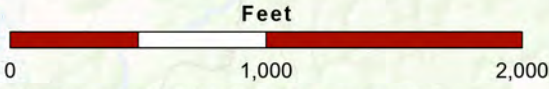
- Bridge
- Boat Launch
- Entrance Booth
- Hand Boat Launch
- Parking
- Scenic View
- Not Passable
- Unmarked Trail
- Roads
- Grafton Lakes State Park
- Water
- Wetland

### Trail Legend

- DB-Double Bit Path - 1.40 Miles
- FA-Fishing Access - 0.27 Miles
- GA-Gartlers - 1.35 Miles
- RE-Red Eft - 0.78 Miles
- SP-Shaver Pond - 1.90 Miles
- SD-South Dunham - 1.50 Miles



Please be considerate of other park users.  
Please report any accident or incident  
immediately to park police.  
All boundaries and trails are shown as approximate.  
Be aware of changing trail conditions.



Map produced by NYSOPRHP GIS Bureau, June 20, 2023.

