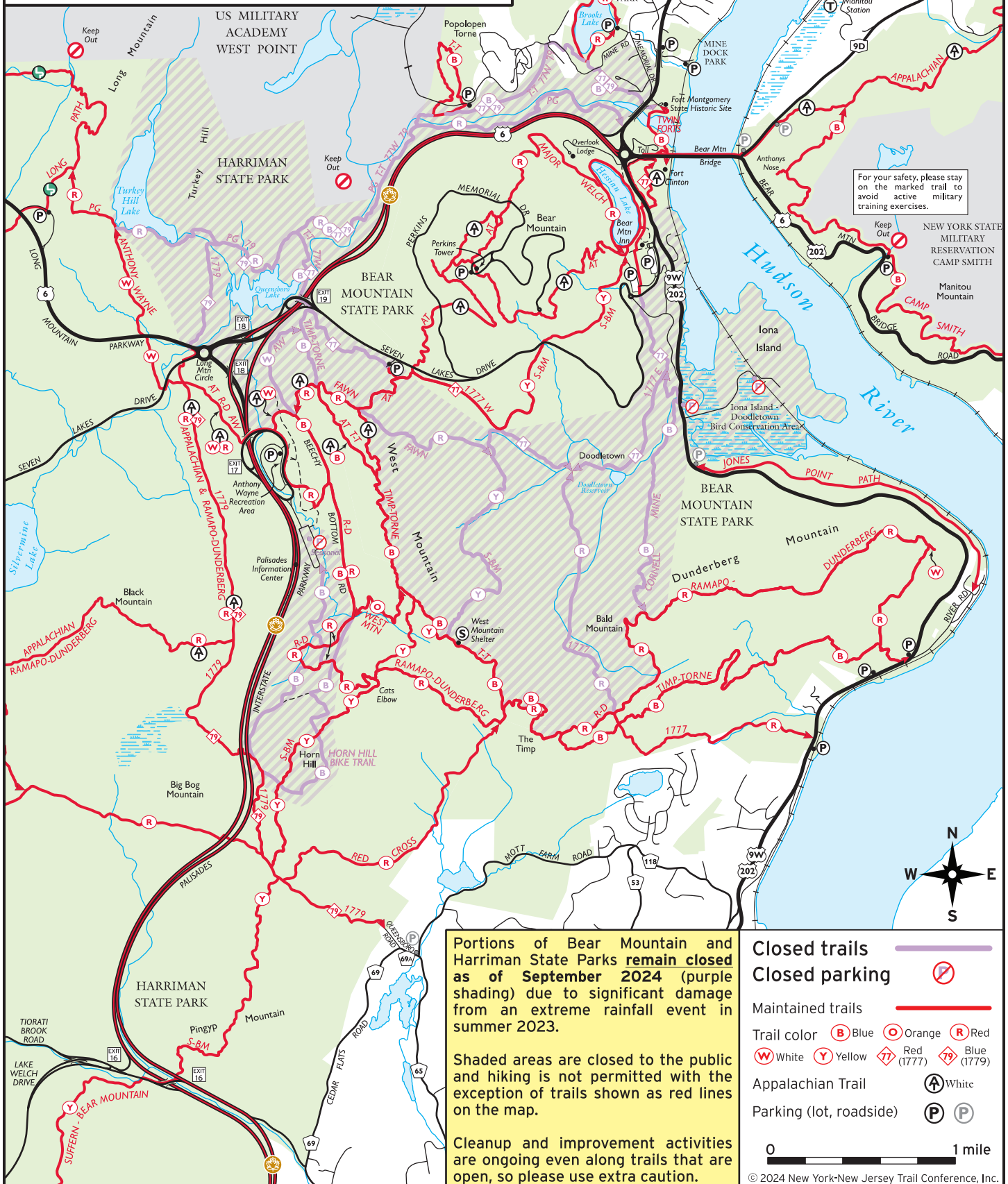




Bear Mountain Area Trail Status

Updated: September 2024



For your safety, please stay on the marked trail to avoid active military training exercises.

Portions of Bear Mountain and Harriman State Parks **remain closed as of September 2024** (purple shading) due to significant damage from an extreme rainfall event in summer 2023.

Shaded areas are closed to the public and hiking is not permitted with the exception of trails shown as red lines on the map.

Cleanup and improvement activities are ongoing even along trails that are open, so please use extra caution.

- Closed trails** (purple line)
- Closed parking** (red circle with slash)
- Maintained trails** (red line)
- Trail color**: (B) Blue, (O) Orange, (R) Red, (W) White, (Y) Yellow, (1777) Red, (1779) Blue
- Appalachian Trail**: (A) White
- Parking (lot, roadside)**: (P) (P)

0 1 mile
© 2024 New York-New Jersey Trail Conference, Inc.