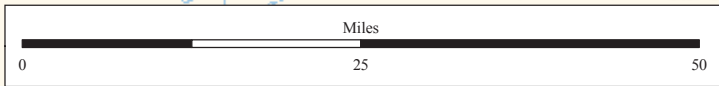
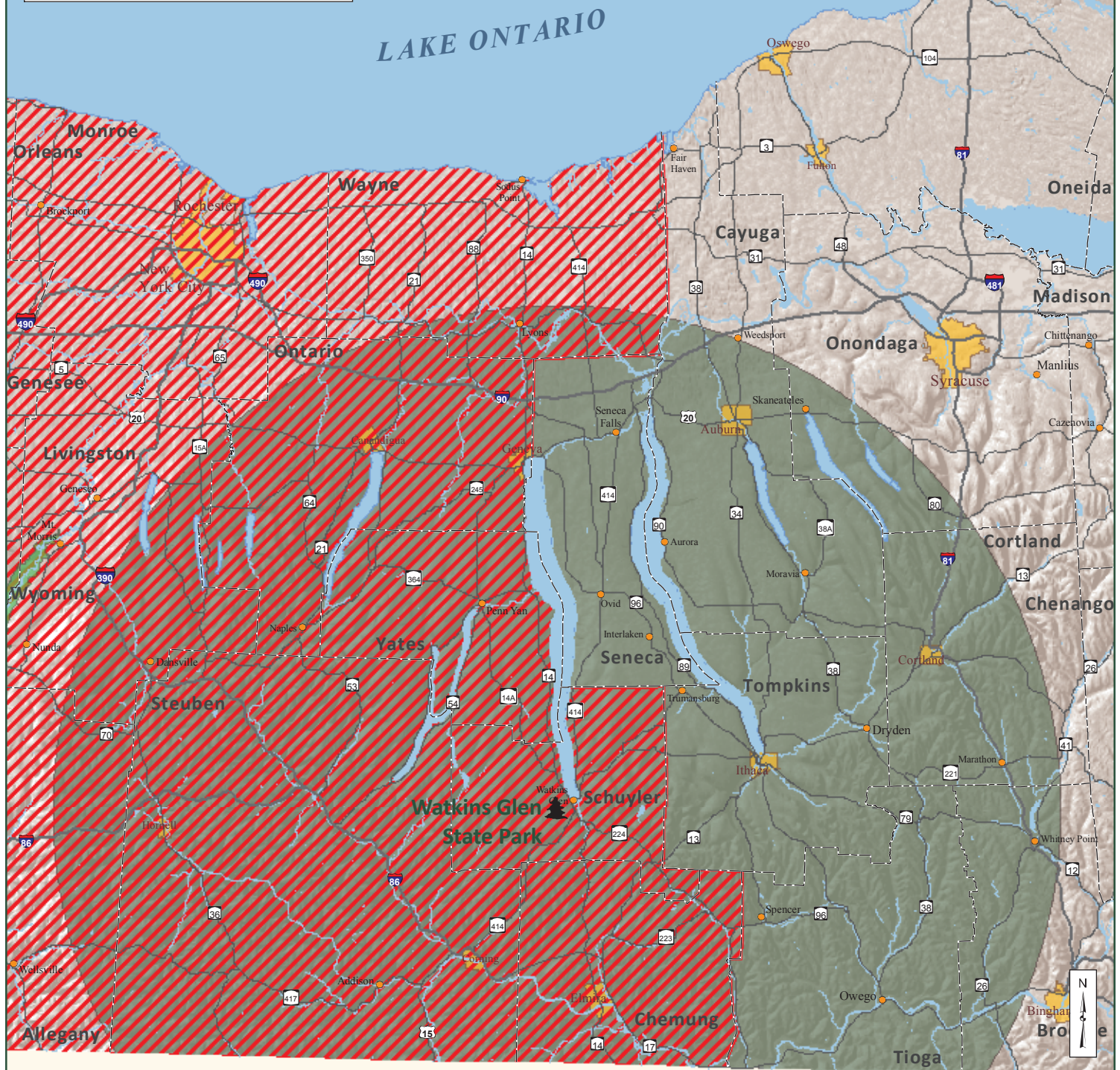


Legend

- 50 Mile Allowable Source Area
- Emerald Ash Borer Quarantine Zone
- State Park

Western New York Counties are under quarantine due to the presence of Emerald Ash Borer beetles. It is **ILLEGAL** for individuals to move untreated firewood or Ash wood out of these counties.



Untreated Firewood Source Area Watkins Glen State Park

Map produced by NYSOPRHP GIS Unit,
December 7, 2011.